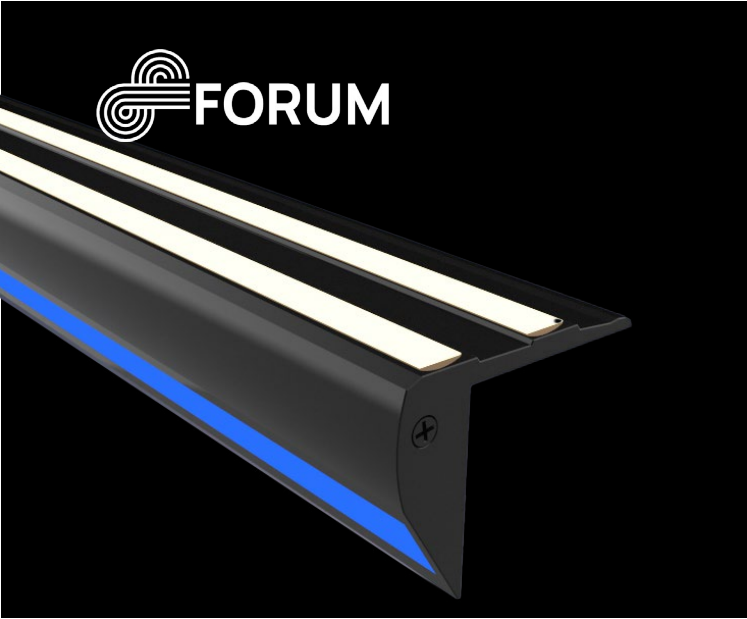




Customer Name	Date
Project Name	
Catalog Number	



riZer Series

Interior Stair Light

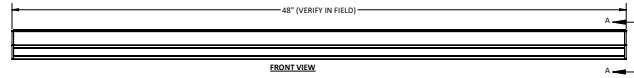
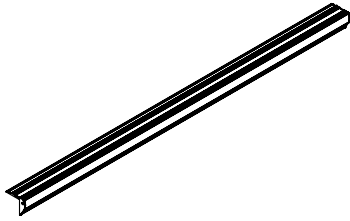
The riZer series by Forum is an extruded aluminum interior stair light luminaire series. riZer features separate up and down light distributions in static white as well as red, blue, green and amber. Straight linear as well as curvilinear configurations are available. riZer is available in standard Black and custom colors and features a premium design, fit and finish.

Ordering

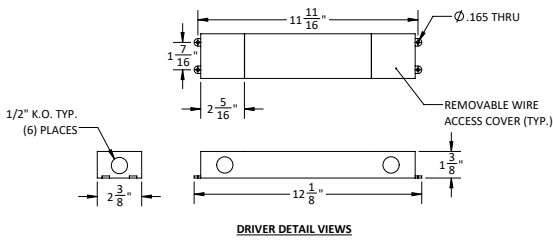
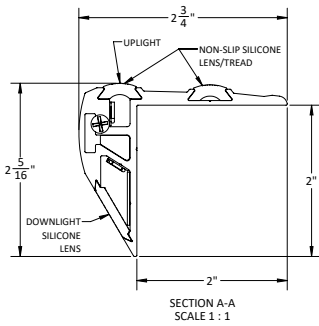
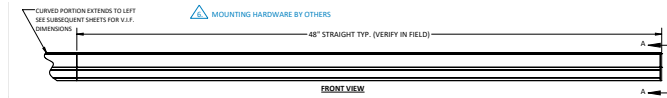
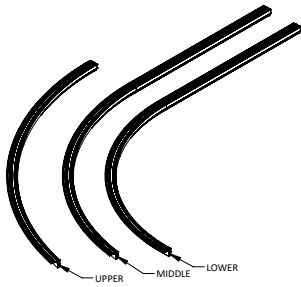
RIZ		Im/LFT	CCT	Im/LFT	CCT	- R - A											
DISTRIBUTION	MOUNTING	UP LIGHT OUTPUT		DOWN LIGHT OUTPUT		SHIELDING	LENGTH	RADIUS	ANGLE SWEEP	VOLTAGE	FINISH	OPTION 1	OPTION 2	OPTION 3			
RIZU riZer UP tread only	23 2-Strip Tread	38 381 lm/ft 3.8 input watts/ft*	27 2700k temp 100%	38 381 lm/ft 3.8 input watts/ft*	27 2700k temp 100%	SIL Silicone Non-Slip Lens	2 2'	XX Specify in inches 48" minimum, 0 for straight	XX Specify in degrees, 0 for straight	UNV Universal	BZ Black Anodized (Standard)	EC Emergency Circuit	DIMMING OPTIONS (CHOOSE 1)				
		3 3'	347V														
RIZD riZer DOWN tread only		* Assumes 2700k w/ tread lens Lumen Multiplier = % of 2700K Consult factory for limitations	30 3000k temp 105%	30 3000k temp 105%	35 3500k temp 108%	35 3500k temp 108%	4 4'	PTRN custom pattern*			CC Custom Color Provide custom color RAL#:	D10V 0-10V dimming 1% power class	DALI Digitally Addressable Lighting Interface	DMX DMX-512-RDM			
			5 5'	DAINTREE WIRELESS CONTROLS OPTIONS (CHOOSE 1)													
			6 6'	TQ Daintree Networked Wireless Enabled for zonal control with WGA100 (use with WOS3 ceiling sensor) *For 0-10V option only	TS Daintree Networked Wireless Enabled with WFA100 adaptor for zonal control (use with WOS3 ceiling sensor) *For 0-10V option only												
			7 7'	LUTRON OPTIONS													
RIZUD riZer UP tread and DOWN riser		*NOTE: Front tread only is lighted. Consult factory for customization.	40 4000k temp 106%	40 4000k temp 106%	R Red	R Red	Specify continuous run length:									DLA2 Lutron Hi-lume 1% 2-wire LED driver (120V forward phase only)	
			G Green	G Green													
			B Blue	B Blue													
			A Amber	A Amber													

RIZER DRAWINGS

riZer Straight - EX. RIZUD-23-38-40-38-B-SIL-8-R0-A0-UNV-BZ-D10V

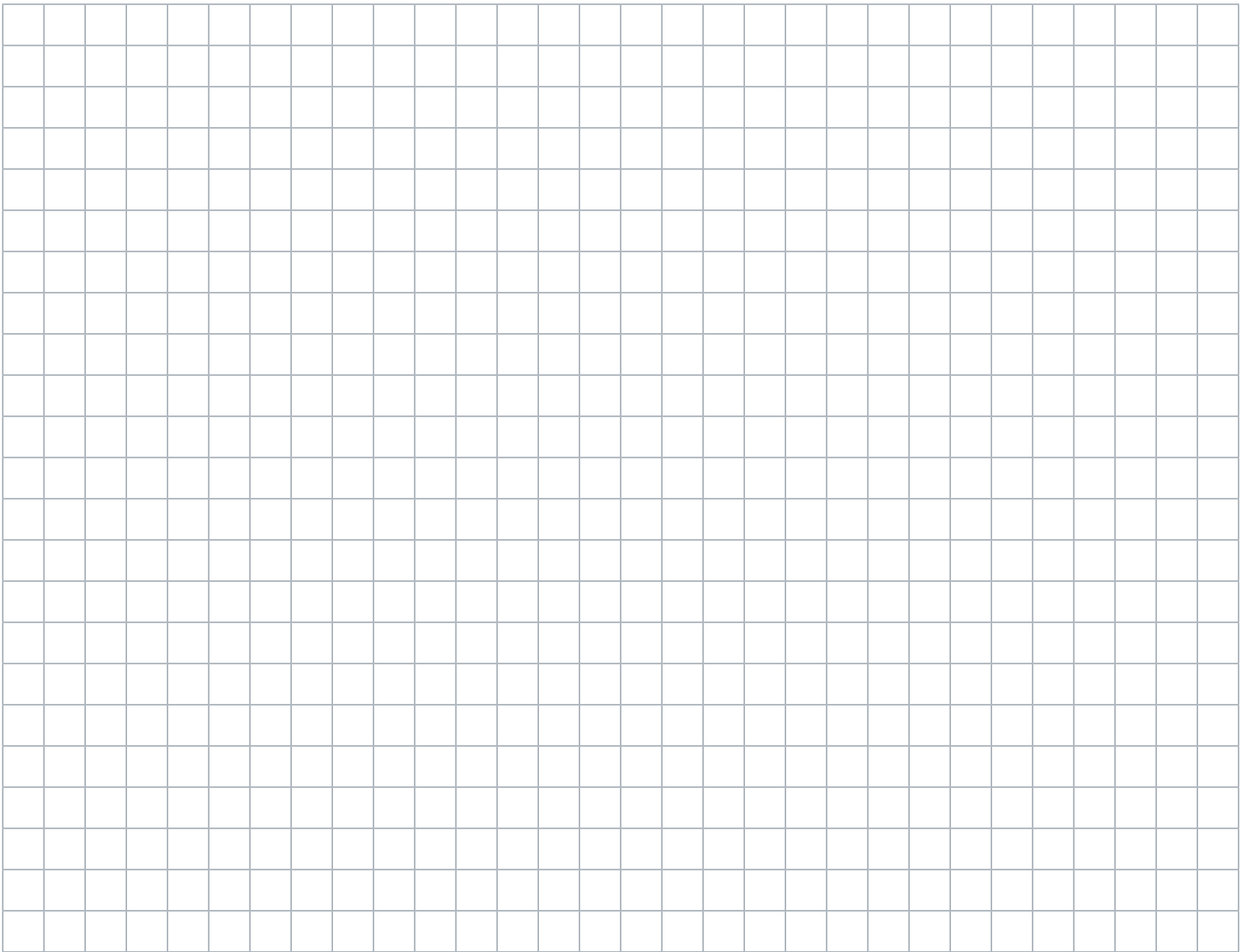


riZer Curved - EX. RIZUD-23-38-40-38-B-SIL-8-R36-A90-UNV-BZ-D10V



Customer Name	Date
Project Name	
Catalog Number	

Pattern Worksheet



Customer Name	Date
Project Name	
Catalog Number	

CONSTRUCTION

Housing:	Extruded aluminum, machined endcaps
Lens:	Silicone lenses
Paint:	Anodized Black, Consult factory for other colors
Weight:	~1.3lb/ft

OPTICAL SYSTEM

Lumens:	381 lm/ft
Distribution:	Up, Down, and Up/Down available
Wattage:	3.8 watts/ft
CCT:	2700k, 3000K, 3500K, 4000K, 5000K
CRI (Min):	90CRI

ELECTRICAL

Input Voltage:	347V, Universal Voltage
Input Frequency:	50/60Hz

CONTROLS

Dimming:	0-10V 1% power class; Lutron Hi-lume 1% 2-wire LED driver; Digitally Addressable Lighting Interface; DMX; Daintree Wireless Controls for zonal control
-----------------	--------------------------------------------------------------------------------------------------------------------------------------------------------

AMBIENT TEMPERATURE

Product ID	Operating Temperature
RIZ:	25°C

LUMEN MAINTENANCE

Projected L70 per IES TM-21 at max 25°C

50,000 HR
L70

MOUNTING

- Surface mount directly to stair edge
- Interior use only

DESIGN LIFE & WARRANTY

- **Forum's Limited 5-year Warranty:** Contact Manufacturer for Warranty Details



For Product or Technical Questions:

E: INFO@FORUMLIGHTING.COM
T: +1 412 781 5970